

SPD

电涌保护器(电源类)

Surge Protective Device (Power)



SET safe | SET fuse

赛尔特

制造电路控制及安全保护元器件 提供电路安全解决方案
Providing a Total Solution for High Standard Safety Circuit Protection

WHAT

CAN DO FOR YOU

赛尔特设计、制造、销售业界领先的**电路控制及安全保护元器件**、提供**电路安全解决方案**。

2000年成立于中国厦门。产品销往40多个国家和地区，与世界500强的部分企业有深远的合作，首创、独创多个产品；取得CCC、UL、cUL、VDE、TUV、PSE、KC等认证，符合RoHS、REACH，获得IATF16949、ISO9001、ISO14001、ISO45001、GB/T29490管理体系认证，参与多项电路保护元器件的国家、国际标准制定、修订。

赛尔特(SETsafe | SETfuse)产品的主要应用市场：通信、防雷器、电源、新能源、照明、家电、移动设备、医疗。

MISSION

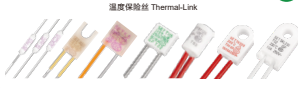
PROVIDING A TOTAL SOLUTION FOR HIGH STANDARD SAFETY CIRCUIT PROTECTION.

SETsafe | SETfuse was established in 2000 in Xiamen, China. We have a presence in more than 40 countries and regions recognising our products. Some of the world's 500 fortune companies are our valuable customers. We have pioneered, innovated & developed several products exclusively. Products are compliance with CCC, UL, cUL, VDE, TUV, PSE, KC, IATF16949, ISO9001, ISO14001, ISO45001, GB/T29490 certificates. We are in one of the core participating teams for revising and setting several national & international standards in the field of Circuit Protection.


SETsafe | SETfuse Key Markets: Telecom, Surge Protector, Power, New Energy, Lighting, Home Appliances, Mobile Devices, Medical.

过温保护 Over Temperature Protection


ATCO
温度保险丝 Thermal-Link 1



DC-ATCO
直流温度保险丝 Thermal-Link 2



OTCO
温度保险丝 Thermal-Link 3

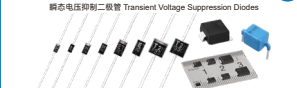


TMS
热保护器 Thermal Protector 4




过电压保护 Over Voltage Protection


TVS Diodes
瞬态电压抑制二极管 Transient Voltage Suppression Diodes 1




GDT
气体放电管 Gas Discharge Tube 2




MOV
压敏电阻 Metal Oxide Varistor 3



TFMOV
热保护型压敏电阻 Thermal Fuse & MOV 4



TFMOV
热保护型压敏电阻 Thermally Protected Varistors 5



过电压保护 Over Voltage Protection

SPD-M
电涌保护模块 Surge Protective Device Module 6



SPD
低压电源系统 Low-voltage Power Systems 7



SPD
光伏供电系统 PV System 8



SPD
室外照明系统 Outdoor Lighting 9



SPD
信号通信系统 Signaling Networks 10



过电流保护 Over Current Protection

Mini Fuses
小型熔断器 Miniature Fuses 1



TRXF
热保护型熔断电阻器 Thermal-Link & Fusing Resistor 2



TPR
热保护型熔断电阻器 Thermally Protected Resistor 3



NTC
抑制浪涌电流NTC热敏电阻器 Inrush Current Limiting NTC Thermistor 4



LV Fuses
低压熔断器 Low Voltage Fuses 5



主动保护 Active Protection

iTCO
受控熔断器 Iode Thermal-Link 1



电涌保护原理 Surge Protection Principle



应用 Applications



机房配电柜
Computer Room Cabinet



直流充电桩
DC Charging Pile



光伏逆变器
Photovoltaic Inverter



不间断电源
Uninterruptible Power Supply (UPS)



户外一体化机柜
Outdoor Integrated Cabinet



电气控制柜
Electrical Control Cabinet

产品概述 Description

导轨安装电涌保护器根据UL 1449 第四版和 IEC/EN 61643-11的相关要求进行设计，具有热脱扣保护，失效指示和遥信触点等功能。具有不同保护模式的电涌保护器适用于低压配电系统，满足重要场所下的高可靠性要求。

Surge Protection Devices (SPDs) are designed to meet requirements of UL 1449 Forth Edition and IEC/EN 61643-11. They are DIN-rail mountable featuring a fail-safe protection, visual indicator and remote signal contact. SPDs for the different protection mode are available for low-voltage distribution system, which meets the requirements of high reliability in important field.

SD25T系列产品特点 Features

符合UL 1449和IEC/EN 61643-11

Comply with UL 1449 and IEC/EN 61643-11

· T1+T2 电涌保护器 Surge Protection Device

可插拔模块

Pluggable Module

· 方便更换
Easy for replacement

遥信

Remote Signaling

· 所有系列可选，用于模块失效遥信告警
Optional in all ranges, for remote signaling of modular end of life



失效指示

Failure Indication

· 直观显示保护装置的寿命状态
Visual indication of life status of the protection device



卡扣和模块机械锁设计

Clasp and Modular Locking Mechanism Design

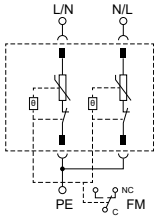
· 模块紧固牢靠，不受振动影响
The pluggable module is fasten and reliable, no vibration Influence
· 仅更换模块与接线时开启卡扣，避免正常运行情况下触及带电部件
Only open the clasp when replacing the module and wiring, to avoid touching the live parts under normal operation



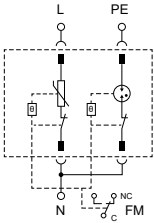
产品系列 Product Series

交流单相电涌保护器 AC Single-phase SPD

SD20/30R

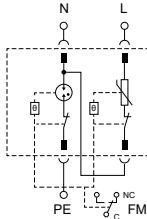


型号 Model	SD20R230L205	SD30R230L205
标称系统电压 (U_n) Nominal System Voltage	230 VAC	230 VAC
最大连续工作电压 (U_c) Max. Continuous Operating Voltage	385 VAC	385 VAC
标称放电电流 (I_n) Nominal Discharge Current (8/20 μ s)	20 kA	30 kA
最大放电电流 (I_{max}) Maximum Discharge Current (8/20 μ s)	40 kA	60 kA
电压保护水平 (U_p) Voltage Protection Level	1.8 kV	2.0 kV
保护模式 Protection Mode	L - PE, N - PE	
SPD 类型 Type	EN 61643-11 Class II	

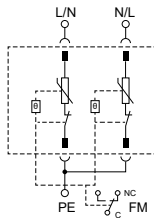


型号 Model	SD20R230A203	SD30R230A203
标称系统电压 (U_n) Nominal System Voltage	230 VAC	230 VAC
最大连续工作电压 (U_c) Max. Continuous Operating Voltage	L - N: 385 VAC N - PE: 255 VAC	L - N: 385 VAC N - PE: 255 VAC
标称放电电流 (I_n) Nominal Discharge Current (8/20 μ s)	20 kA	30 kA
最大放电电流 (I_{max}) Maximum Discharge Current (8/20 μ s)	40 kA	60 kA
电压保护水平 (U_p) Voltage Protection Level	L - N: 1.8 kV N - PE: 1.0 kV	L - N: 2.0 kV N - PE: 1.5 kV
保护模式 Protection Mode	1 + 1 (L - N, N - PE)	
SPD 类型 Type	EN 61643-11 Class II	

SD20RS



型号 Model	SD20RS230A203
标称系统电压 (U_n) Nominal System Voltage	230 VAC
最大连续工作电压 (U_c) Max. Continuous Operating Voltage	L - N: 385 VAC; N - PE: 255 VAC
标称放电电流 (I_n) Nominal Discharge Current (8/20 μ s)	20 kA
最大放电电流 (I_{max}) Maximum Discharge Current (8/20 μ s)	40 kA
电压保护水平 (U_p) Voltage Protection Level	L - N: 1.8 kV; N - PE: 1.0 kV
保护模式 Protection Mode	1+1 (L-N, N-PE)
SPD 类型 Type	EN 61643-11 Class II

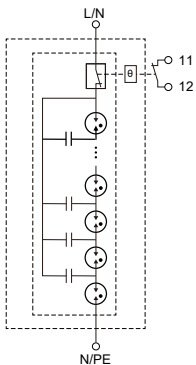


型号 Model	SD20RS230L205
标称系统电压 (U_n) Nominal System Voltage	230 VAC
最大连续工作电压 (U_c) Max. Continuous Operating Voltage	460 VAC
标称放电电流 (I_n) Nominal Discharge Current (8/20 μ s)	20 kA
最大放电电流 (I_{max}) Maximum Discharge Current (8/20 μ s)	40 kA
电压保护水平 (U_p) Voltage Protection Level	2.0 kV
保护模式 Protection Mode	L - PE, N - PE
SPD 类型 Type	EN 61643-11 Class II

产品系列 Product Series

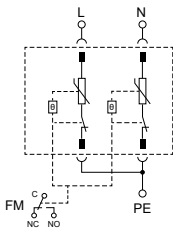
交流单相电涌保护器 AC Single-phase SPD

SD25B



型号 Model	SD25B275D100
标称系统电压 (U_n) Nominal System Voltage	240 VAC
最大连续工作电压 (U_c) Max. Continuous Operating Voltage	275 VAC
标称放电电流 (I_n) Nominal Discharge Current (8/20 μ s)	30 kA
最大放电电流 (I_{max}) Maximum Discharge Current (8/20 μ s)	60 kA
冲击放电电流 (I_{imp}) Impulse Discharge Current (10/350 μ s)	25 kA
电压保护水平 (U_p) Voltage Protection Level	≤ 2.0 kV
续流遮断能力 Follow Current Interrupt Rating	50 kA
保护模式 Protection Mode	L-N / N-PE
SPD 类型 Type	EN 61643-11 Class I and Class II

SD25T



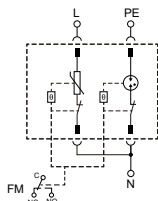
型号 Model	SD25T150L205	SD25T175L205
标称系统电压 (U_n) Nominal System Voltage	120 VAC	120 VAC
最大连续工作电压 (U_c) Max. Continuous Operating Voltage	150 VAC	175 VAC
标称放电电流 (I_n) Nominal Discharge Current (8/20 μ s)	25 kA	25 kA
最大放电电流 (I_{max}) Maximum Discharge Current (8/20 μ s)	50 kA	50 kA
冲击放电电流 (I_{imp}) Impulse Discharge Current (10/350 μ s)	12.5 kA	12.5 kA
电压保护水平 (U_p) Voltage Protection Level	1.0 kV	1.3 kV
保护模式 Protection Mode	L - PE, N - PE	
SPD 类型 Type	EN 61643-11 Class I and Class II	

型号 Model	SD25T275L205	SD25T320L205	SD25T385L205	SD25T440L205	SD25T550L205
标称系统电压 (U_n) Nominal System Voltage	230 VAC	230 VAC	230 VAC	345 VAC	480 VAC
最大连续工作电压 (U_c) Max. Continuous Operating Voltage	275 VAC	320 VAC	385 VAC	440 VAC	550 VAC
标称放电电流 (I_n) Nominal Discharge Current (8/20 μ s)	25 kA	25 kA	25 kA	25 kA	25 kA
最大放电电流 (I_{max}) Maximum Discharge Current (8/20 μ s)	50 kA	50 kA	50 kA	50 kA	50 kA
冲击放电电流 (I_{imp}) Impulse Discharge Current (10/350 μ s)	12.5 kA	11.0 kA	11 kA	10 kA	7.5 kA
电压保护水平 (U_p) Voltage Protection Level	1.5 kV	1.8 kV	2.0 kV	2.1 kV	2.8 kV
保护模式 Protection Mode	L - PE, N - PE				
SPD 类型 Type	EN 61643-11 Class I and Class II				

产品系列 Product Series

交流单相电涌保护器 AC Single-phase SPD

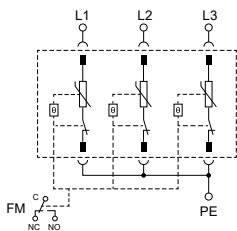
SD25T



型号 Model	SD25T150A203	SD25T275A203	SD25T320A203	SD25T385A203
标称系统电压 (U_n) Nominal System Voltage	120 VAC	230 VAC	230 VAC	230 VAC
最大连续工作电压 (U_c) Max. Continuous Operating Voltage	L - N: 150 VAC; N - PE: 255 VAC	L - N: 275 VAC; N - PE: 255 VAC	L - N: 320 VAC; N - PE: 255 VAC	L - N: 385 VAC; N - PE: 255 VAC
标称放电电流 (I_n) Nominal Discharge Current (8/20 μ s)	25 kA	25 kA	25 kA	25 kA
最大放电电流 (I_{max}) Maximum Discharge Current (8/20 μ s)	50 kA	50 kA	50 kA	50 kA
冲击放电电流 (I_{imp}) Impulse Discharge Current (10/350 μ s)	L - N: 12.5 kA N - PE: 12.5 kA	L - N: 12.5 kA N - PE: 12.5 kA	L - N: 11.5 kA N - PE: 12.5 kA	L - N: 11.0 kA N - PE: 12.5 kA
电压保护水平 (U_p) Voltage Protection Level	L - N: 1.0 kV; N - PE: 1.5 kV	L - N: 1.5 kV; N - PE: 1.5 kV	L - N: 1.8 kV; N - PE: 1.5 kV	L - N: 2.0 kV; N - PE: 1.5 kV
保护模式 Protection Mode	1 + 1 (L - N, N - PE)			
SPD 类型 Type	EN 61643-11 Class I and Class II			

交流三相电涌保护器 AC Three-phase SPD

SD25T



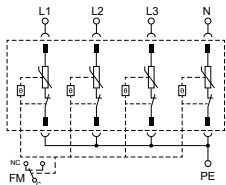
型号 Model	SD25T150L306	SD25T175L306
标称系统电压 (U_n) Nominal System Voltage	120 / 208 VAC	120 / 208 VAC
最大连续工作电压 (U_c) Max. Continuous Operating Voltage	150 VAC	175 VAC
标称放电电流 (I_n) Nominal Discharge Current (8/20 μ s)	25 kA	25 kA
最大放电电流 (I_{max}) Maximum Discharge Current (8/20 μ s)	50 kA	50 kA
冲击放电电流 (I_{imp}) Impulse Discharge Current (10/350 μ s)	12.5 kA	12.5 kA
电压保护水平 (U_p) Voltage Protection Level	1.0 kV	1.3 kV
保护模式 Protection Mode	3 + 0 (L - PE)	
SPD 类型 Type	EN 61643-11 Class I and Class II	

型号 Model	SD25T320L306	SD25T385L306	SD25T440L306	SD25T550L306	SD25T680L306
标称系统电压 (U_n) Nominal System Voltage	240 VAC	230 / 400 VAC	277 / 480 VAC	480 VAC	690 VAC
最大连续工作电压 (U_c) Max. Continuous Operating Voltage	320 VAC	385 VAC	440 VAC	550 VAC	680 VAC
标称放电电流 (I_n) Nominal Discharge Current (8/20 μ s)	25 kA	25 kA	25 kA	25 kA	25 kA
最大放电电流 (I_{max}) Maximum Discharge Current (8/20 μ s)	50 kA	50 kA	50 kA	50 kA	50 kA
冲击放电电流 (I_{imp}) Impulse Discharge Current (10/350 μ s)	11.5 kA	11.0 kA	10.0 kA	7.5 kA	5.0 kA
电压保护水平 (U_p) Voltage Protection Level	1.8 kV	2.0 kV	2.1 kV	2.8 kV	3.2 kV
保护模式 Protection Mode	3 + 0 (L - PE)				
SPD 类型 Type	EN 61643-11 Class I and Class II				

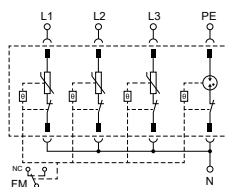
产品系列 Product Series

交流三相电涌保护器 AC Three-phase SPD

SD20/30R



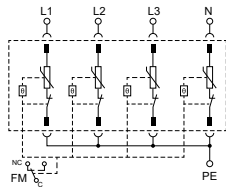
型号 Model	SD20R230L405	SD30R230L405
标称系统电压 (U_n) Nominal System Voltage	230 VAC	230 VAC
最大连续工作电压 (U_c) Max. Continuous Operating Voltage	385 VAC	385 VAC
标称放电电流 (I_n) Nominal Discharge Current (8/20 μ s)	20 kA	30 kA
最大放电电流 (I_{max}) Maximum Discharge Current (8/20 μ s)	40 kA	60 kA
电压保护水平 (U_p) Voltage Protection Level	1.8 kV	2.0 kV
保护模式 Protection Mode	4 + 0 (L - PE, N - PE)	
SPD 类型 Type	EN 61643-11 Class II	



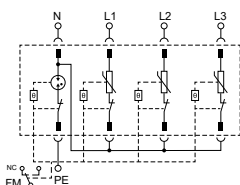
型号 Model	SD20R230A404	SD30R230A404
标称系统电压 (U_n) Nominal System Voltage	230 VAC	230 VAC
最大连续工作电压 (U_c) Max. Continuous Operating Voltage	L - N: 385 VAC N - PE: 255 VAC	L - N: 385 VAC N - PE: 255 VAC
标称放电电流 (I_n) Nominal Discharge Current (8/20 μ s)	20 kA	30 kA
最大放电电流 (I_{max}) Maximum Discharge Current (8/20 μ s)	40 kA	60 kA
电压保护水平 (U_p) Voltage Protection Level	L - N: 1.8 kV N - PE: 1.0 kV	L - N: 2.0 kV N - PE: 1.5 kV
保护模式 Protection Mode	3 + 1 (L - N, N - PE)	
SPD 类型 Type	EN 61643-11 Class II	

备注：其他电压规格产品可根据客户需求定制
Note: Other voltage rating can be customized

SD20RS



型号 Model	SD20RS230L405
标称系统电压 (U_n) Nominal System Voltage	230 VAC
最大连续工作电压 (U_c) Max. Continuous Operating Voltage	460 VAC
标称放电电流 (I_n) Nominal Discharge Current (8/20 μ s)	20 kA
最大放电电流 (I_{max}) Maximum Discharge Current (8/20 μ s)	40 kA
电压保护水平 (U_p) Voltage Protection Level	2.0 kV
保护模式 Protection Mode	4 + 0 (L - PE, N - PE)
SPD 类型 Type	EN 61643-11 Class II

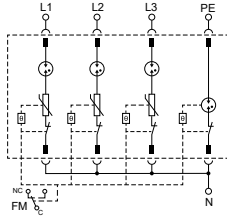


型号 Model	SD20RS230A404
标称系统电压 (U_n) Nominal System Voltage	230 VAC
最大连续工作电压 (U_c) Max. Continuous Operating Voltage	L - N: 385 VAC; N - PE: 255 VAC
标称放电电流 (I_n) Nominal Discharge Current (8/20 μ s)	20 kA
最大放电电流 (I_{max}) Maximum Discharge Current (8/20 μ s)	40 kA
电压保护水平 (U_p) Voltage Protection Level	L - N: 1.8 kV; N - PE: 1.0 kV
保护模式 Protection Mode	3 + 1 (L - N, N - PE)
SPD 类型 Type	EN 61643-11 Class II

产品系列 Product Series

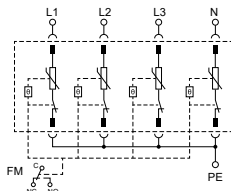
交流三相电涌保护器 AC Three-phase SPD

SD20H



型号 Model	SD20H230A404
标称系统电压 (U_n) Nominal System Voltage	230 VAC
最大连续工作电压 (U_c) Max. Continuous Operating Voltage	L - N: 275 VAC; N - PE: 255 VAC
标称放电电流 (I_n) Nominal Discharge Current (8/20 μ s)	20 kA
最大放电电流 (I_{max}) Maximum Discharge Current (8/20 μ s)	40 kA
电压保护水平 (U_p) Voltage Protection Level	1.0 kV
保护模式 Protection Mode	3 + 1 (L - N, N - PE)
SPD 类型 Type	EN 61643-11 Class II

SD25T



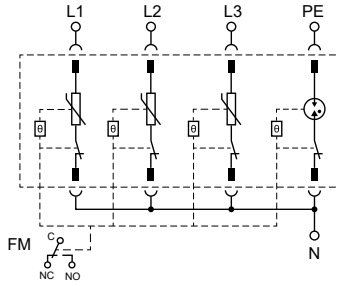
型号 Model	SD25T150L405	SD25T175L405
标称系统电压 (U_n) Nominal System Voltage	120/208 VAC	120/208 VAC
最大连续工作电压 (U_c) Max. Continuous Operating Voltage	150 VAC	175 VAC
标称放电电流 (I_n) Nominal Discharge Current (8/20 μ s)	25 kA	25 kA
最大放电电流 (I_{max}) Maximum Discharge Current (8/20 μ s)	50 kA	50 kA
冲击放电电流 (I_{imp}) Impulse Discharge Current (10/350 μ s)	12.5 kA	12.5 kA
电压保护水平 (U_p) Voltage Protection Level	1.0 kV	1.3 kV
保护模式 Protection Mode	4 + 0 (L - PE, N - PE)	
SPD 类型 Type	EN 61643-11 Class I and Class II	

型号 Model	SD25T275L405	SD25T320L405	SD25T385L405	SD25T440L405	SD25T550L405
标称系统电压 (U_n) Nominal System Voltage	230 / 380 VAC	230 / 400 VAC	277 / 480 VAC	277 / 480 VAC	400 / 690 VAC
最大连续工作电压 (U_c) Max. Continuous Operating Voltage	275 VAC	320 VAC	385 VAC	440 VAC	550 VAC
标称放电电流 (I_n) Nominal Discharge Current (8/20 μ s)	25 kA	25 kA	25 kA	25 kA	25 kA
最大放电电流 (I_{max}) Maximum Discharge Current (8/20 μ s)	50 kA	50 kA	50 kA	50 kA	50 kA
冲击放电电流 (I_{imp}) Impulse Discharge Current (10/350 μ s)	12.5 kA	11.5 kA	11.0 kA	10.0 kA	7.5 kA
电压保护水平 (U_p) Voltage Protection Level	1.5 kV	1.8 kV	2.0 kV	2.1 kV	2.8 kV
保护模式 Protection Mode	4 + 0 (L - PE, N - PE)				
SPD 类型 Type	EN 61643-11 Class I and Class II				

产品系列 Product Series

交流三相电涌保护器 AC Three-phase SPD

SD25T

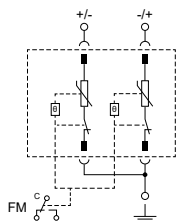


型号 Model	SD25T150A404	SD25T175A404	SD25T275A404	SD25T320A404	SD25T385A404
标称系统电压 (U_n) Nominal System Voltage	120 / 208 VAC	120 / 208 VAC	230 / 380 VAC	230 / 400 VAC	230 / 400 VAC
最大连续工作电压 (U_c) Max. Continuous Operating Voltage	L - N: 150 VAC; N - PE: 255 VAC	L - N: 175 VAC; N - PE: 255 VAC	L - N: 275 VAC; N - PE: 255 VAC	L - N: 320 VAC; N - PE: 255 VAC	L - N: 385 VAC; N - PE: 255 VAC
标称放电电流 (I_n) Nominal Discharge Current (8/20 μ s)	25 kA	25 kA	25 kA	25 kA	25 kA
最大放电电流 (I_{max}) Maximum Discharge Current (8/20 μ s)	50 kA	50 kA	50 kA	50 kA	50 kA
冲击放电电流 (I_{imp}) Impulse Discharge Current (10/350 μ s)	L - N: 12.5 kA N - PE: 12.5 kA	L - N: 12.5 kA N - PE: 12.5 kA	L - N: 12.5 kA N - PE: 12.5 kA	L - N: 11.5 kA N - PE: 12.5 kA	L - N: 11.0 kA N - PE: 12.5 kA
电压保护水平 (U_p) Voltage Protection Level	L - N: 1.0 kV; N - PE: 1.5 kV	L - N: 1.3 kV; N - PE: 1.5 kV	L - N: 1.5 kV; N - PE: 1.5 kV	L - N: 1.8 kV; N - PE: 1.5 kV	L - N: 2.0 kV; N - PE: 1.5 kV
保护模式 Protection Mode	3 + 1 (L - N, N - PE)				
SPD 类型 Type	EN 61643-11 Class I and Class II				

产品系列 Product Series

直流/光伏直流电涌保护器 DC / PVDC SPD

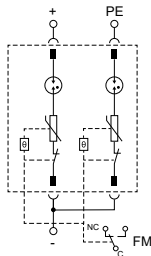
SD25T



型号 Model	SD25T100L211PV	SD25T200L211PV
光伏应用最大连续工作电压 (U_{cav}) Max. Continuous Operating Voltage for PV Application	180 VDC	250 VDC
标称放电电流 (I_n) Nominal Discharge Current (8/20 μ s)	25 kA	25 kA
最大放电电流 (I_{max}) Maximum Discharge Current (8/20 μ s)	50 kA	50 kA
冲击放电电流 (I_{imp}) Impulse Discharge Current (10/350 μ s)	12.5 kA	12.5 kA
电压保护水平 (U_p) Voltage Protection Level	1.0 kV	1.3 kV
保护模式 Protection Mode	+/- — PE	+/- — PE
SPD 类型 Type	EN 61643-31 Class I and Class II	

型号 Model	SD25T300L211PV	SD25T400L211PV	SD25T500L211PV	SD25T600L211PV
光伏应用最大连续工作电压 (U_{cav}) Max. Continuous Operating Voltage for PV Application	330 VDC	450 VDC	550 VDC	670 VDC
标称放电电流 (I_n) Nominal Discharge Current (8/20 μ s)	25 kA	25 kA	25 kA	25 kA
最大放电电流 (I_{max}) Maximum Discharge Current (8/20 μ s)	50 kA	50 kA	50 kA	50 kA
冲击放电电流 (I_{imp}) Impulse Discharge Current (10/350 μ s)	12.5 kA	11.0 kA	10.0 kA	7.5 kA
电压保护水平 (U_p) Voltage Protection Level	1.5 kV	2.0 kV	2.1 kV	2.5 kV
保护模式 Protection Mode	+/- — PE	+/- — PE	+/- — PE	+/- — PE
SPD 类型 Type	EN 61643-31 Class I and Class II			

SD20H

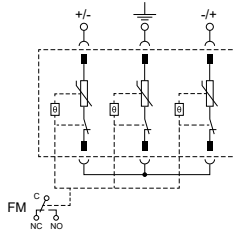


型号 Model	SD20H270A203-DC
标称系统电压 (U_n) Nominal System Voltage	270 VDC
光伏应用最大连续工作电压 (U_{cav}) Max. Continuous Operating Voltage for PV Application	300 VDC
标称放电电流 (I_n) Nominal Discharge Current (8/20 μ s)	20 kA
最大放电电流 (I_{max}) Maximum Discharge Current (8/20 μ s)	40 kA
电压保护水平 (U_p) Voltage Protection Level	1.0 kV
保护模式 Protection Mode	+ — -, — PE
SPD 类型 Type	EN 61643-31 Class II

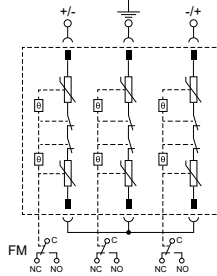
产品系列 Product Series

直流/光伏直流电涌保护器 DC / PVDC SPD

SD25T



SD25TS

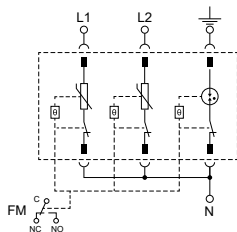


型号 Model	SD25T600L312PV	SD25T800L312PV	SD25T1000L312PV	SD25TS1500L312PV
光伏应用最大连续工作电压 (U_{SPV}) Max. Continuous Operating Voltage for PV Application	660 VDC	900 VDC	1000 VDC	1500 VDC
标称放电电流 (I_n) Nominal Discharge Current (8/20 μ s)	25 kA	25 kA	25 kA	25 kA
最大放电电流 (I_{max}) Maximum Discharge Current (8/20 μ s)	50 kA	50 kA	50 kA	50 kA
冲击放电电流 (I_{imp}) Impulse Discharge Current (10/350 μ s)	12.5 kA	11.0 kA	10.0 kA	12.5 kA
电压保护水平 (U_p) Voltage Protection Level	≤ 3.0 kV	≤ 4.0 kV	≤ 4.2 kV	6.4 kV
保护模式 Protection Mode	+ —, + — PE, — — PE			
SPD 类型 Type	EN 61643-31 Class I and Class II			

产品系列 Product Series

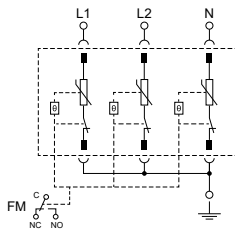
分相系统电涌保护器 Split-phase system SPD

SD25T



型号 Model	SD25T150A301	SD25T175A301	SD25T385A301
标称系统电压 (U_n) Nominal System Voltage	120 / 240 VAC	120 / 240 VAC	240 / 480 VAC
最大连续工作电压 (U_c) Max. Continuous Operating Voltage	L1/L2-N: 150 VAC; N-PE: 255 VAC	L1/L2-N: 175 VAC; N-PE: 255 VAC	L1/L2-N: 385 VAC; N-PE: 255 VAC
标称放电电流 (I_n) Nominal Discharge Current (8/20 μ s)	25 kA	25 kA	25 kA
最大放电电流 (I_{max}) Maximum Discharge Current (8/20 μ s)	50 kA	50 kA	50 kA
冲击放电电流 (I_{imp}) Impulse Discharge Current (10/350 μ s)	12.5 kA	12.5 kA	11.0 kA
电压保护水平 (U_p) Voltage Protection Level	L1/L2-N: 1.0 kV; N-PE: 1.5 kV	L1/L2-N: 1.3 kV; N-PE: 1.5 kV	L1/L2-N: 2.0 kV; N-PE: 1.5 kV
保护模式 Protection Mode		L - N - PE	
SPD 类型 Type		UL 1449 Type 4CA	

SD25T

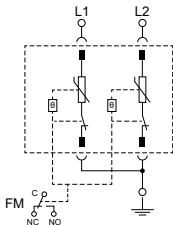


型号 Model	SD25T150L302	SD25T175L302	SD25T385L302
标称系统电压 (U_n) Nominal System Voltage	120 / 240 VAC	120 / 240 VAC	240 / 480 VAC
最大连续工作电压 (U_c) Max. Continuous Operating Voltage	150 VAC	175 VAC	385 VAC
标称放电电流 (I_n) Nominal Discharge Current (8/20 μ s)	25 kA	25 kA	25 kA
最大放电电流 (I_{max}) Maximum Discharge Current (8/20 μ s)	50 kA	50 kA	50 kA
冲击放电电流 (I_{imp}) Impulse Discharge Current (10/350 μ s)	12.5 kA	12.5 kA	11.0 kA
电压保护水平 (U_p) Voltage Protection Level	1.0 kV	1.3 kV	2.0 kV
保护模式 Protection Mode		L - PE, N - PE	
SPD 类型 Type		UL 1449 Type 4CA	

产品系列 Product Series

分相系统电涌保护器 Split-phase system SPD

SD25T



型号 Model	SD25T150L201	SD25T175L201	SD25T320L201
标称系统电压 (U_n) Nominal System Voltage	120 / 240 VAC	120 / 240 VAC	240 / 480 VAC
最大连续工作电压 (U_c) Max. Continuous Operating Voltage	150 VAC	175 VAC	320 VAC
标称放电电流 (I_n) Nominal Discharge Current (8/20 μ s)	25 kA	25 kA	25 kA
最大放电电流 (I_{max}) Maximum Discharge Current (8/20 μ s)	50 kA	50 kA	50 kA
冲击放电电流 (I_{mp}) Impulse Discharge Current (10/350 μ s)	12.5 kA	12.5 kA	11.5 kA
电压保护水平 (U_p) Voltage Protection Level	1.0 kV	1.3 kV	1.8 kV
保护模式 Protection Mode		L - PE	
SPD 类型 Type		UL 1449 Type 4CA	

www.SETsafe.com
www.SETfuse.com

20+

OVER 20 YEARS OF DESIGNING, MANUFACTURING
AND SELLING OF CIRCUIT PROTECTION COMPONENTS
超过20年的设计、制造、销售电路保护元器件

40+

SOLD TO MORE THAN 40 COUNTRIES AND REGIONS
40多个国家和地区的客户选择赛尔特品牌

自动化

AUTOMATIC PROCESS PRODUCTION
自动化工序生产

500

A BRAND CHOSEN BY FORTUNE 500 COMPANIES
世界500强企业选择品牌



厦门火炬高新区（翔安）产业区翔安西路8067, 8001号
NO. 8067, 8001 West Xiang'an Road, Torch High-Tech
Industrial District, Xiang'an 361101 Xiamen P.R. China
www.SETsafe.com www.SETfuse.com
+86 592-5715-838 sales@SETfuse.com

厦门赛尔特电子有限公司版权所有
All Rights Reserved by Xiamen SET Electronics Co., Ltd.
更新 Update: Jun 2, 2022

SETsafe | *SETfuse*
赛尔特